

"PREPARING PEOPLE TO DO  
GREATER THINGS FOR GOD AND  
HIS KINGDOM."

# **CAGS NEW STUDENT ORIENTATION**

*Support, Services, and  
Community Information*

# **STUDENT SERVICES WELCOMES YOU TO MACU**

**WE ARE SO GLAD YOU ARE HERE!**



NEW STUDENT ORIENTATION  
SERVES TO INFORM YOU OF THE  
KEY SERVICES AND SYSTEMS YOU  
WILL ENCOUNTER AT MACU. OUR  
HOPE IS THAT THIS INFORMATION  
WILL HELP YOU FEEL INFORMED  
AND PREPARED FOR YOUR  
EDUCATIONAL JOURNEY.

KEEP THIS DOCUMENT AS A  
REFERENCE FOR FUTURE USE.

# TABLE OF CONTENTS

STUDENT SERVICES.....4

FINANCIAL AID.....5

BURSAR.....6

OUTSIDE SCHOLARSHIPS AND GRANTS.....7

BOOKSTORE.....8

GRADUATE FASTER.....9

STUDENT SUCCESS.....10

ONELOGIN.....11

A WEEK IN THE LIFE.....12

CAFE 1412.....13

MACU LIBRARY.....14

MACU CHAPEL.....15

PARKING PASSES/STUDENT ID.....16

NOTES.....17



# STUDENT SERVICES

## STUDENT SUPPORT SPECIALISTS

YOUR SUPPORT SPECIALIST IS HERE AS YOUR FIRST POINT OF CONTACT AT MACU ONCE YOU BEGIN CLASSES.

OUR MISSION IS TO HELP STRENGTHEN YOUR RESOLVE TO FINISH WHAT YOU STARTED, TO SERVE YOU THROUGH TIMELY INFORMATIVE CONTACT, AND TO SUPPORT YOU THROUGH ANY OBSTACLES YOU MAY FACE THROUGHOUT YOUR EDUCATIONAL JOURNEY. IF YOU NEED ASSISTANCE, YOU CAN REACH YOUR SUPPORT SPECIALIST AT THE SOLUTION CENTER.

## THE SOLUTION CENTER

**877-569-3198**

**CAGSSTUDENTSERVICES@MACU.EDU**

*Monday-Thursday: 8 am-6 pm*

*Friday: 8 am-5 pm*



# FINANCIAL AID

## 5 STEP GUIDE TO APPLY FOR FEDERAL STUDENT AID

1. APPLY FOR A FEDERAL STUDENT AID USER ID  
([STUDENTAID.GOV](http://STUDENTAID.GOV))
2. COMPLETE THE FAFSA ([STUDENTAID.GOV](http://STUDENTAID.GOV))
3. SIGN THE MASTER PROMISSORY NOTE AND COMPLETE  
LOAN ENTRANCE COUNSELING  
([HTTPS://STUDENTLOANS.GOV](https://STUDENTLOANS.GOV))
4. COMPLETE THE AUTHORIZATION OF FUNDS  
([WWW.MACU.EDU/FINANCIAL-AID/5-STEP-GUIDE-TO-FINANCIAL-AID.HTML](http://WWW.MACU.EDU/FINANCIAL-AID/5-STEP-GUIDE-TO-FINANCIAL-AID.HTML))
5. BEGIN THE SEARCH FOR OUTSIDE SCHOLARSHIPS AND  
GRANTS!

## FINANCIAL AID COUNSELORS

DO YOU USE FEDERAL FUNDING TO PAY FOR  
YOUR EDUCATION? IF SO, YOU PROBABLY HAVE  
QUESTIONS!

EACH STUDENT IS ASSIGNED A FINANCIAL AID  
COUNSELOR TO HELP YOU NAVIGATE FEDERAL  
TITLE IV LOANS AND GRANTS. YOU MAY REACH  
YOUR FINANCIAL AID COUNSELOR BY CALLING  
THE SOLUTION CENTER.

MACU SCHOOL CODE: 006942

# BURSAR

## OVERAGES

### WHAT IS AN OVERAGE?

- IF YOUR FINANCIAL AID, SCHOLARSHIP, TRIBAL PAYMENT, ETC. IS MORE THAN YOUR BALANCE, AN OVERAGE IS DUE TO YOU.

### HOW LONG DOES IT TAKE TO GET MY OVERAGE?

- IF ELIGIBLE, OVERAGES ARE AVAILABLE WITHIN 14 BUSINESS DAYS AFTER ALL FUNDS ARE APPLIED TO YOUR ACCOUNT.
- FUNDS ARE APPLIED EACH SUB-TERM (2 COURSES).

## DIRECT DEPOSIT

SIGN UP FOR DIRECT DEPOSIT TO RECEIVE OVERAGES FASTER AND MORE CONVENIENTLY.

### TIMELINE:

- CHECKS FOR OVERAGES ARE MAILED EVERY WEDNESDAY
- DIRECT DEPOSIT FUNDS FOR OVERAGES ARE GENERALLY AVAILABLE ON WEDNESDAY AND FRIDAY

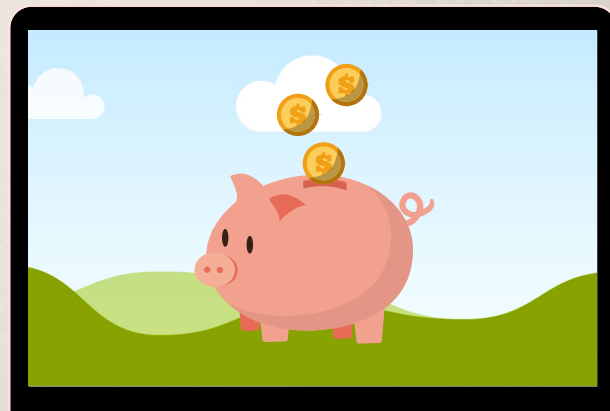
CONTACT US: [BUSINESSOFFICE@MACU.EDU](mailto:BUSINESSOFFICE@MACU.EDU)

OR 405-692-3294

# OUTSIDE SCHOLARSHIPS AND GRANTS RESOURCES

Organizations, companies, and people give awards to individual students to assist them with their college education. The scholarship or grant provider sets the qualifications. Many Scholarships have spring deadlines for application and are offered with no fee. These opportunities can be found through various sources such as civic and fraternal organizations, employers, and churches.

*DO NOT be misled by offers to help with scholarships or searches for a fee!*



## BEGIN YOUR SEARCH HERE

[WWW.MACU.EDU/SCHOLARSHIPS](http://WWW.MACU.EDU/SCHOLARSHIPS)

# BARNES AND NOBLE COLLEGE BOOKSTORE

**WITH BARNES AND NOBLE COLLEGE AS YOUR TEXTBOOK PROVIDER, YOU CAN EXPECT SOME GREAT BENEFITS.**

- SEARCH THE MARKETPLACE FOR THE BEST PRICES
- ENJOY GUARANTEED BUYBACK ON MANY BOOK PURCHASES
- FREE SHIPPING ON ORDERS OVER \$49
- PRICE MATCH WITH AMAZON.COM
- RENT OR BUY NEW AND USED BOOKS
- AND MORE!
- FOR A HELPFUL VIDEO WITH INSTRUCTIONS CLICK [HERE](#).

## BOOK VOUCHERS

BOOK VOUCHERS ARE AVAILABLE FOR ELIGIBLE STUDENTS TO PURCHASE BOOKS. A VOUCHER IS AN ADVANCE ON ANY OVERAGE A STUDENT MAY RECEIVE FROM TITLE IV LOANS AND GRANTS. STUDENTS MUST CURRENTLY BORROW FINANCIAL AID AND QUALIFY FOR AN OVERAGE TO RECEIVE A VOUCHER.

STUDENTS INTERESTED IN USING A BOOK VOUCHER TO PURCHASE BOOKS MUST OPT IN TO THE SERVICE.

ACCESS THE "**BOOK VOUCHER REQUEST**" FORM ON YOUR STUDENT PORTAL UNDER THE STUDENT SERVICES TAB. THE FORM IS LOCATED JUST BELOW YOUR COURSE SCHEDULE.

## MACU CAMPUS STORE

SHOW OFF SOME MACU PRIDE WITH GEAR FROM THE CAMPUS STORE. WE HAVE CLOTHING, ACCESSORIES, SPIRIT WEAR, AND MORE. THE CAMPUS STORE ALSO OFFERS REFRESHMENTS FOR THOSE ON CAMPUS.

SHOP ONLINE AT [MACUCAMPUSSTORE.COM](http://MACUCAMPUSSTORE.COM)



# GRADUATE FASTER

## PRIOR LEARNING

UNDERGRADUATE STUDENTS MAY QUALIFY FOR CREDIT  
BASED ON LIFE EXPERIENCE.

CREDIT COULD BE EARNED IF YOU HAVE:

LICENSES, CERTIFICATIONS, LEADERSHIP EXPERIENCE, ON  
THE JOB TRAINING, ATTENDED AN UNACCREDITED COLLEGE,  
WORK IN MINISTRY, AND MUCH MORE!

[WWW.MACU.EDU/PRIOR-LEARNING-CREDIT](http://WWW.MACU.EDU/PRIOR-LEARNING-CREDIT)

**COMPLETE THE COURSE**

**UNIV2503 TO QUALIFY.**

*Students may earn up to 30 credit hours  
as space allows through Prior Learning.*



## TESTING

MACU HAPPILY ACCEPTS CLEP AND DSST EXAMS. TESTS  
ARE ADMINISTERED AT MOST COMMUNITY COLLEGES  
ACROSS THE COUNTRY. THESE CREDIT-BEARING EXAMS  
ARE SUBJECT-SPECIFIC AND CAN APPLY TO A VARIETY OF  
UNDERGRADUATE COURSES.

**CONTACT YOUR SUPPORT SPECIALIST FOR  
TESTS THAT APPLY TO YOUR PROGRAM.**

*Students may earn up to 30 credit  
hours as space allows through testing.*

## FAST TRACK PROGRAM

MACU OFFERS A FAST TRACK PROGRAM TO STUDENTS INTERESTED IN CONTINUING ON TO  
EARN A GRADUATE DEGREE. QUALIFYING STUDENTS MAY TAKE UP TO 12 GRADUATE CREDIT  
HOURS DURING THEIR JUNIOR/SENIOR YEAR AND APPLY IT TOWARD A GRADUATE DEGREE.

*Speak with a Support Specialist for details!*



# STUDENT SUCCESS



## WRITING CENTER

**FREE** WRITING ASSISTANCE IS AVAILABLE ONLINE OR ON CAMPUS BY APPOINTMENT. OUR TUTORS PROVIDE FEEDBACK ON GRAMMAR, SPELLING, FORMATTING, ETC., SO THAT YOU CAN TURN IN THE BEST PAPER POSSIBLE.

*Submit online in Desire2Learn*

*On-Campus: By appointment only*

## ONLINE TUTORING

CAGS STUDENTS ENJOY **FREE** ONLINE TUTORING THROUGH "UPSWING". SIMPLY ENTER THE NAME OF YOUR COURSE AND CHOOSE FROM THE AVAILABLE TUTORS. YOU MAY SIGN UP FOR 4 HOURS PER WEEK AS NEEDED.

AVAILABLE 24/7.

*Upswing is found at [macu.onelogin.com](https://macu.onelogin.com).*

## ACCOMMODATIONS

MACU SEEKS TO CREATE AN ENVIRONMENT WHERE ALL CAPABLE STUDENTS ARE PROVIDED ACCESS TO EDUCATIONAL OPPORTUNITIES. REASONABLE AND APPROPRIATE ACCOMMODATIONS WILL BE PROVIDED FOR THOSE STUDENTS WHO QUALIFY AS HAVING A DISABILITY UNLESS DOING SO CREATES AN UNDUE BURDEN FOR THE INSTITUTION OR FUNDAMENTALLY ALTERS A PROGRAM.

*Email [accommodations@macu.edu](mailto:accommodations@macu.edu) or visit the Student Success page on your Student Portal.*

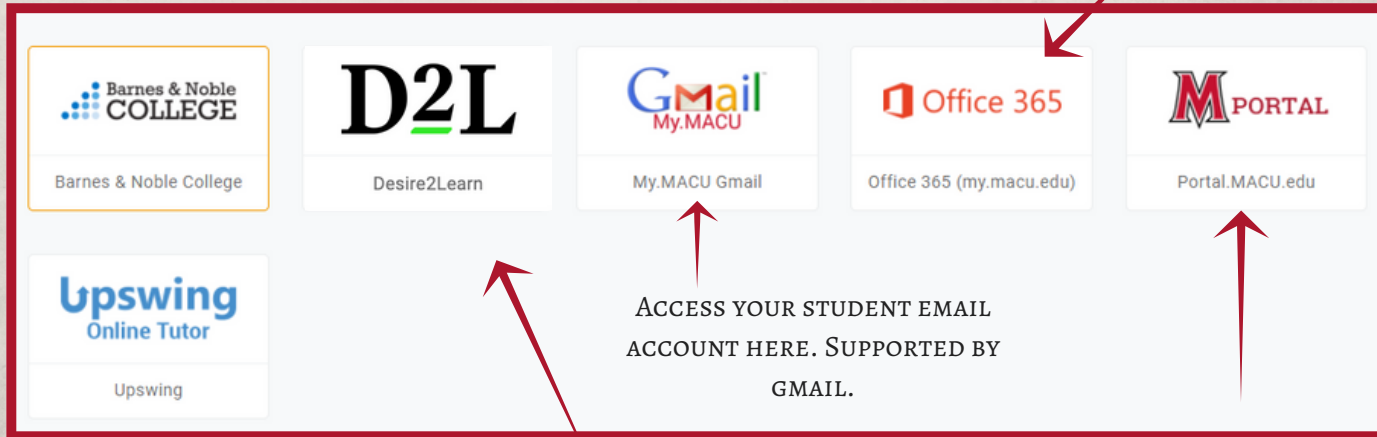
The logo for Upswing, featuring a blue 'U' with an upward-pointing arrow integrated into its top curve, followed by the word 'pswing' in a grey, lowercase, sans-serif font.

# MACU.ONELOGIN.COM

AFTER YOU CREATE YOUR USERNAME AND  
PASSWORD WITH BARNES AND NOBLE  
COLLEGE, ENTER THE INFORMATION HERE FOR  
A QUICK SHORTCUT TO THE BOOKSTORE.

1. Create your own password  
2. Login with your  
*username@my.macu.edu* email  
address.

ACCESS MICROSOFT  
OFFICE PRODUCTS FOR  
FREE FOR AS LONG AS YOU  
ARE A STUDENT AT MACU.



SELECT UPSWING FOR  
FREE ONLINE TUTORING.  
ENTER YOUR COURSE  
CODE TO FIND A TUTOR.

ACCESS D2L TO ATTEND CLASS, RECEIVE  
BOOKSTORE EMAILS, COMMUNICATE WITH  
YOUR INSTRUCTOR, AND USE THE ONLINE  
WRITING CENTER.

CHECK HERE FOR YOUR GRADES,  
SCHEDULE, DEGREE SHEETS, BILLING,  
FINANCIAL DOCUMENTS, DIRECT  
DEPOSIT, TRANSCRIPTS, AND MORE.  
NEW STUDENT ORIENTATION VIDEOS  
ARE ALSO AVAILABLE HERE.

# A WEEK IN THE LIFE OF A MACU STUDENT

\*\*THE BELOW INFORMATION IS AN AVERAGE STUDENT EXPERIENCE. THE SCHEDULE MAY CHANGE WITH EACH COURSE!\*\*

Sunday	Monday	Tuesday	Wednesday	Thursday	Friday	Saturday
		Week 1: Day 1 Syllabus, course docs, weekly content	Week 1: Day 2 Read. Prepare for Discussion Question 1	Week 1: Day 3 Read. Start Homework <i>DQ 1 Due</i>	Week 1: Day 4 Read/research. Prepare for DQ 2.	Week 1: Day 5 Read. Do Homework <i>DQ 2 Due</i>
Sunday	Monday	Tuesday	Wednesday	Thursday	Friday	Saturday
Week 1: Day 6 Homework!	Week 1: Day 7 <i>Homework Due!</i>	Week 2: Day 1	Week 2: Day 2	Week 2: Day 3	Week 2: Day 4	Week: Day 5

## WHAT DOES YOUR WEEK LOOK LIKE?

Review your course requirements and fill in the calendar below. Consider when in your day you will complete each item.

Sunday	Monday	Tuesday	Wednesday	Thursday	Friday	Saturday
		Week 1: Day 1	Week 1: Day 2	Week 1: Day 3	Week 1: Day 4	Week 1: Day 5
Sunday	Monday	Tuesday	Wednesday	Thursday	Friday	Saturday
Week 1: Day 6	Week 1: Day 7	Week 2: Day 1	Week 2: Day 2	Week 2: Day 3	Week 2: Day 4	Week 2: Day 5



# CAFÉ 1412

NIGHTLY HOURS

AUGUST-MAY

5:30 PM TO 7:00 PM

MONDAY-FRIDAY

<https://macu.pconline.net>

ENJOY FRESH ROTISSERIE, HOT LINE, SELF  
COOK, SALAD BAR, AND MORE. FOLLOW  
OUR TWITTER PAGE, @CAFE1412, FOR  
DAILY MENUS AND SPECIALS.

- TO-GO BOXES AVAILABLE
- ALL YOU CARE TO EAT FOR \$7.50.
- FLEX DOLLARS ARE AVAILABLE AND DO NOT EXPIRE SO LONG AS YOU REMAIN ACTIVELY ENROLLED AS A STUDENT.





# MACU LIBRARY

[WWW.MACU.EDU/ACADEMICS/LIBRARY.HTML](http://WWW.MACU.EDU/ACADEMICS/LIBRARY.HTML)

## GENERAL LIBRARY HOURS

MONDAY-THURSDAY: 7:30 AM - 10:00 PM

FRIDAY: 9:00 AM - 5:00 PM

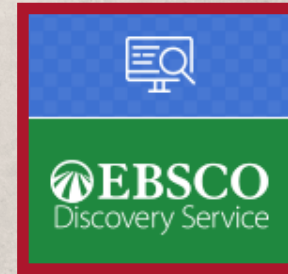
SATURDAY: 1:00 PM - 5:00 PM

SUNDAY: 3:00 PM - 9:00 PM

SEARCH FAQ'S REGARDING  
LIBRARY RESOURCES,  
RESEARCH, ETC., SUBMIT A  
QUESTION, OR CHAT LIVE WITH  
A LIBRARIAN.



**Ask the Library**



YOUR GO-TO SEARCH TOOL FOR  
FINDING JOURNAL ARTICLES, EBOOKS,  
AUDIOBOOKS, VIDEOS AND PHYSICAL  
RESOURCES IN THE LIBRARY



# MACU CHAPEL

JOIN US ON CAMPUS OR STREAM OUR SERVICES LIVE AT

[WWW.MACU.EDU](http://WWW.MACU.EDU)

OR

[FACEBOOK.COM/MIDAMERICACHRISTIANUNIVERSITY](https://FACEBOOK.COM/MIDAMERICACHRISTIANUNIVERSITY).

EVERY WEDNESDAY AND FRIDAY  
DURING THE SCHOOL YEAR AT  
10:05 AM CST.

*"For where two or three are gathered in  
my name, there I am among them."  
Matthew 18:20*





**WWW.MACUATHLETICS.COM**

VISIT THE SITE FOR UPDATES ON GAME  
SCHEDULES AND TICKET INFORMATION. YOU  
CAN ALSO WATCH LIVE ONLINE!

**#MACUPROUD**





## PARKING PASSES

STUDENTS WHO PLAN TO REGULARLY BE ON THE MACU CAMPUS FOR CLASSES OR FOR OTHER SERVICES WILL NEED A PARKING PASS.

PASSES ARE VALID FROM JULY TO JUNE AND MUST BE RENEWED ANNUALLY.

SIGN UP ON YOUR STUDENT PORTAL AT  
[HTTPS://MACU.ONELOGIN.COM](https://macu.onelogin.com)



## STUDENT ID CARDS

HAVING A MACU STUDENT ID CARD MAY QUALIFY YOU FOR STUDENT DISCOUNTS AT A VARIETY OF LOCATIONS. TO REQUEST A MACU

ID CARD, PLEASE EMAIL  
[CAGSSTUDENTSERVICES@MACU.EDU](mailto:CAGSSTUDENTSERVICES@MACU.EDU) WITH  
THE FOLLOWING: A COLOR HEAD SHOT PHOTO  
OF YOU IN FRONT OF A WHITE BACKGROUND,  
YOUR FULL NAME, STUDENT ID NUMBER, AND  
MAILING ADDRESS

# NOTES

CHECK OUT OUR NEW STUDENT ORIENTATION PLAYLIST ON YOUTUBE OR ON  
THE MACU STUDENT PORTAL

*Dream Bigger, Do Greater*

**IF YOU HAVE ANY  
QUESTIONS, PLEASE  
CONTACT THE SOLUTION  
CENTER AT THE NUMBER  
BELOW.**

MACU SOLUTION CENTER

877-569-3198

CAGSSTUDENTSERVICES@MACU.EDU